

# Franje

*tout petit & Alfredo Zinola Productions (B/D)*

## Technical Rider

This Technical rider is part of the contract. Adjustments can be made whenever possible

### 1. Contacts

#### Tour Technician

Jonas Slosse +32 0498 165547, [jonas@spoton.lighting](mailto:jonas@spoton.lighting)

#### Light Designer

Marek Lamprecht +41 775260220, [contact@mareklamprecht.de](mailto:contact@mareklamprecht.de)

#### Production & Tour Management

Pauline Van Nuffel +32 0470 998535, [communicatie@toutpetit.be](mailto:communicatie@toutpetit.be)

Micaela Kühn Jara +45 93939730, [micaela@alfredozinola.com](mailto:micaela@alfredozinola.com)

### 2. General Informations

#### Team

3 dancers + 1 tour technician

#### Duration

50 min, max 2 shows per day with a 1 hour break in between shows.

#### Audience

- Age: Everybody from 4 years old, for schools/kindergartens and families
- Max capacity: depending on the venue 80 – 100 persons.

#### Technical personnel

- 2 technicians from the theater for set up and strike
- 1 technician from the theater on stand-by during shows
- The company provides one technician, who leads the set up and runs the shows

#### Set up time

If everything is pre-hang, we need 5 hours to set up. We provide a light plan in advance. If adaptations are needed, the set up time needs to be longer.

#### Strike

1 hour

## 3. Stage

### Dimensions

11m x 8m for the performing space (adjustments are possible for different dimension, please ask us)

### Height

5m (lower ceilings and rigs also possible, please ask us)

### Floor

Black or grey dance vinyl.

### Audience sitting

The audience sits on stage on a **semi circle** (see lighting plan) in **3- 4 levels**, starting on the floor. The ideal arrangement is: a first row of cushions on the floor, a second row of low benches, a third row of chairs, a fourth row of chairs on a platform/riser if needed. It is recommended a height difference of about 25 cm between chairs for best visibility.

### Audience entrance and during show

The dancers bring the audience in small groups to their sits, from the stage door. Ticket control needs to be done before that. The front of house is expected to be in the room during the show, to assist the audience if there is a need to exit during the show.

### Regie

The technical desk is ideally behind the audience

## 4. Light

See attachment for the lighting plan and light requirements.

Contact Jonas Slosse (technician) 0498/165547.

We bring:

- MA3 compact

We ask:

- R114 (Hamburg Frost)
- R119 (Light Hamburg Frost) or similar.

## 5. Sound

The theatre provides 4 high-quality speakers. Two of them left and right behind the playing area, preferably hanging, otherwise on high stands.

The subwoofer is connected to these two speakers. The other two speakers are for a number of sound effects and these must be placed left and right behind the audience.

These speakers do not need a subwoofer. The technician of tout petit has his own mixing desk and provides 4 audio signals via XLR.

1&2: front left and right (with sub)

3&4: behind audience left and right (without sub)

We ask:

- 4 high-end full range speakers with at least 1 subwoofer

## 6. Scenography



The costumes are hung on 2 bars close to the back wall, spaced 1m apart and between 50 cm - 1 m from the back wall. There will be 29 ropes hung from which the costumes will be attached. We provide the strings and hooks.

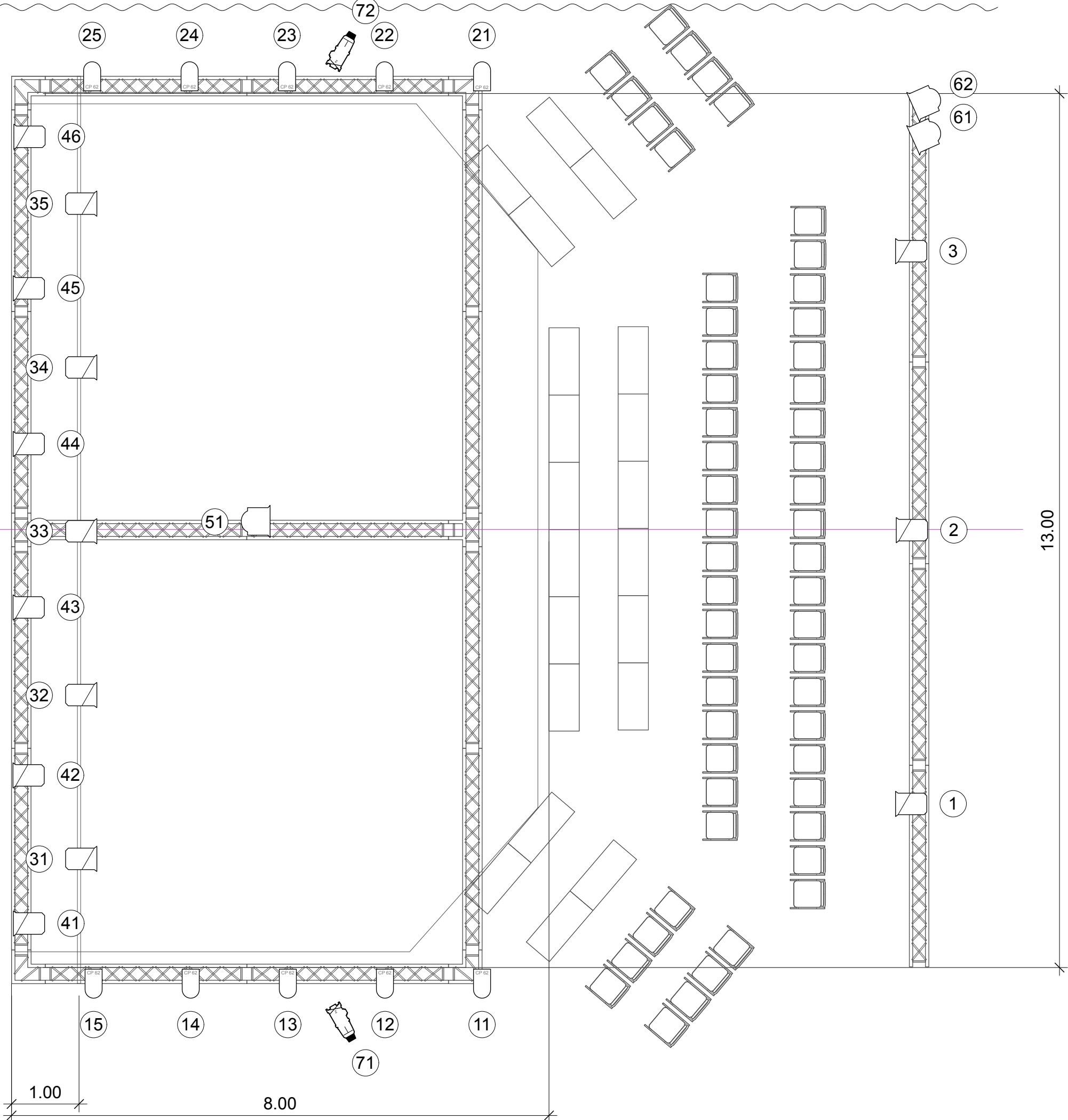
Depending on the venue, the back wall should be covered with black curtains. Please provide **pictures of the space beforehand.**

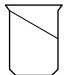
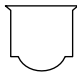



We travel with the scenography, no storage needed.

## 7. Others

We require a heated changing room(s) for 3 people, access to showers with hot water and 3 towels.

If traveling by car, we need 1 – 2 parking spots for cars (small size).



	310 HPC @1kw/1.2kw	14
	325 HF @2kw/2.5kw	3
	PAR64 CP62 @1KW	10
	ETC Source 4 Zoom 25-50deg @750 W	2
	USITT Floor Stand 1 @0 W	2

Farbe	Größe	Anzahl
L228	PAR64 CP62	10
L179 + L250	325 HF	1
R114	310 HPC	8
R119	310 HPC	6
L600	325 HF	2

Notes:

- CH# 31 - 35 and CH#41 - 46 could be replaced by 1kw Fresnel
- CH# 71 & 72 could be replaced by 1kw Fresnel
- For CH# 51 a 5kw Fresnel would even be better...
- The company can provide L228, L179, L259 and L600
- Please provide:  
R114 (Hamburg Frost) and  
R119 (Light Hamburg Frost) or similar.

Franje - General Plot

tout petit & a. zinola

Scale: 1:60

A3

Date: 27.01.2025

drawn: ML